



NATALIIA BODROVA

PORTFOLIO

nataliabodrova@gmail.com
www.nataliabodrova.com



Stained Glass



'Inspired by William Morris' exhibition



'Nature is watching'

Leaded glass panel

The panel was made for the online exhibition 'Inspired by William Morris' on the British Society of Master Glass Painters website.

'Odin One-Eyed, the main god of Icelandic pagan tradition, flanked by his two all seeing and all remembering ravens Huginn (Mind) and Muninn (Memory), whispering into his ears all that they have seen and heard, while mimicking a blueberry bush to observe our behaviour towards nature in secret.



Derek Hunt's workshop 'Two-days Glass Painting'



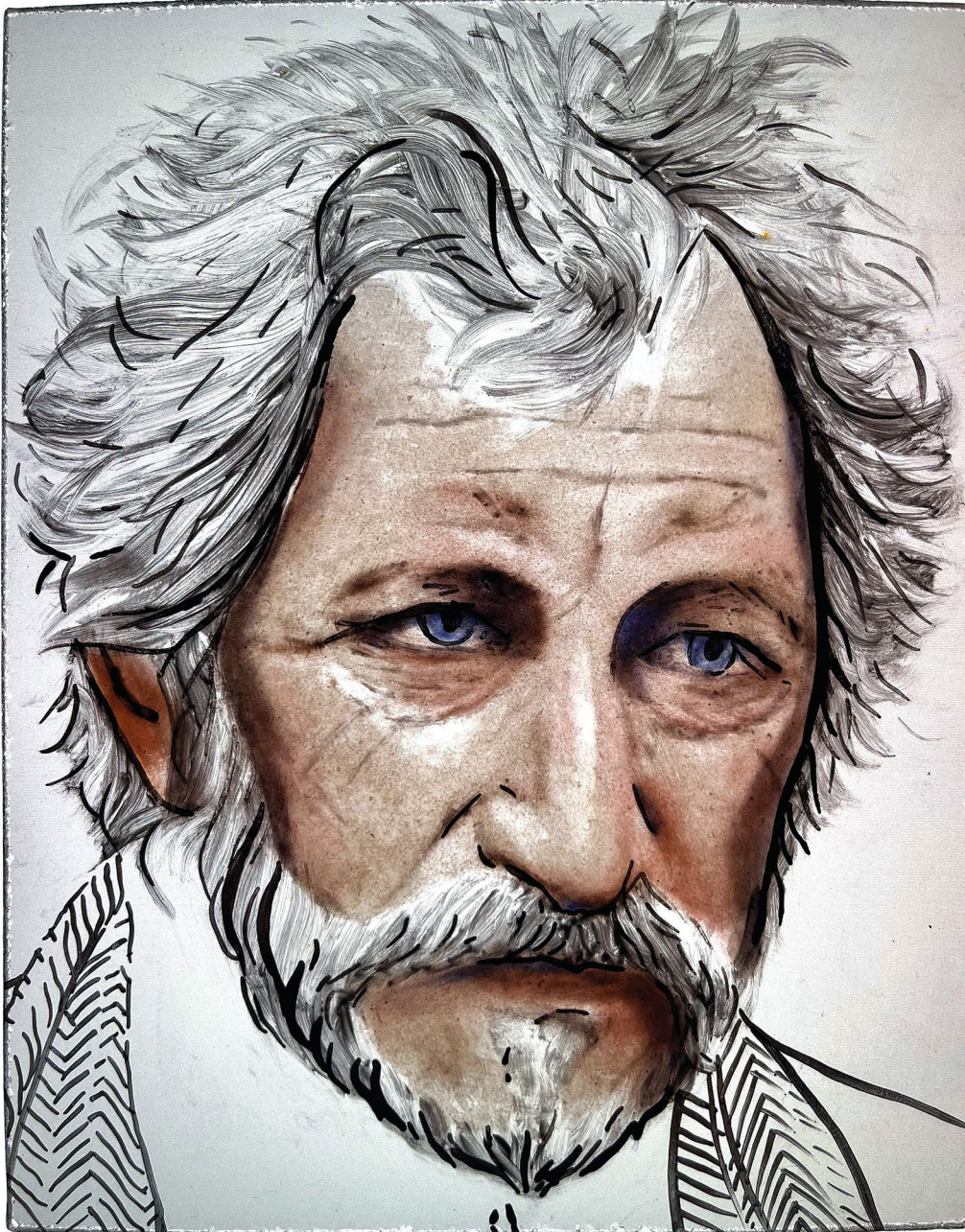
'Nativity scene' (fragment)

Painted and stained glass panel

This image represents a fragment of the original stained glass panel titled 'Nativity Scene', created by Thomas Willement around 1845. It was produced as part of the final project during my participation in the Two-Day Glass Painting Workshop, led by Derek Hunt at the Stained Glass Museum within Ely Cathedral.



Ellen van Dijk's workshop 'Advanced Portrait Painting'



'Male portrait'

Painted and enamelled glass panel

The glass panel is the final project, made while participating in the workshop 'Advanced Portrait Painting on Glass' by Ellen van Dijk at the Glasatelier Ellen.



Ellen van Dijk's workshop 'Advanced Portrait Painting'



'Saint'

Painted and stained glass panel

The glass panel is the final project, made while participating in the workshop 'Advanced Portrait Painting on Glass' by Ellen van Dijk at the Glasatelier Ellen.



Ellen van Dijk's workshop 'Advanced Portrait Painting'



'Lady'

Painted glass panel

The glass panel is the final project, made while participating in the workshop 'Advanced Portrait Painting on Glass' by Ellen van Dijk at the Glasatelier Ellen. The panel was painted with glycol.



'Cecily of York' (reproduction)

Painted, stained and enamelled glass panel

The glass panel is the final project, made while participating in the masterclasses 'Glass Painting Masterclass' and 'Silver Stain and Enamel Masterclass' by Jonathan Cooke at The University of Wales Trinity Saint David.



Jonathan Cooke's masterclass



'Púki' /Demon/ (reproduction)

Painted, stained and enamelled glass panel

The glass panel (it is a copy of a passage from the main window of Hallgrímskirkja, which was made in 1999 by Leifur Breiðfjörð, the Icelandic stained glass artist) is the final project, made while participating in the masterclasses 'Glass Painting Masterclass' and 'Silver Stain and Enamel Masterclass' by Jonathan Cooke at The University of Wales Trinity Saint David.



Painted and leaded glass panel

The panel was made while being tutored in Flora Jamieson's Stained Glass studio.



'The Window into the Garden'

Painted, stained and leaded glass panel in Victorian style

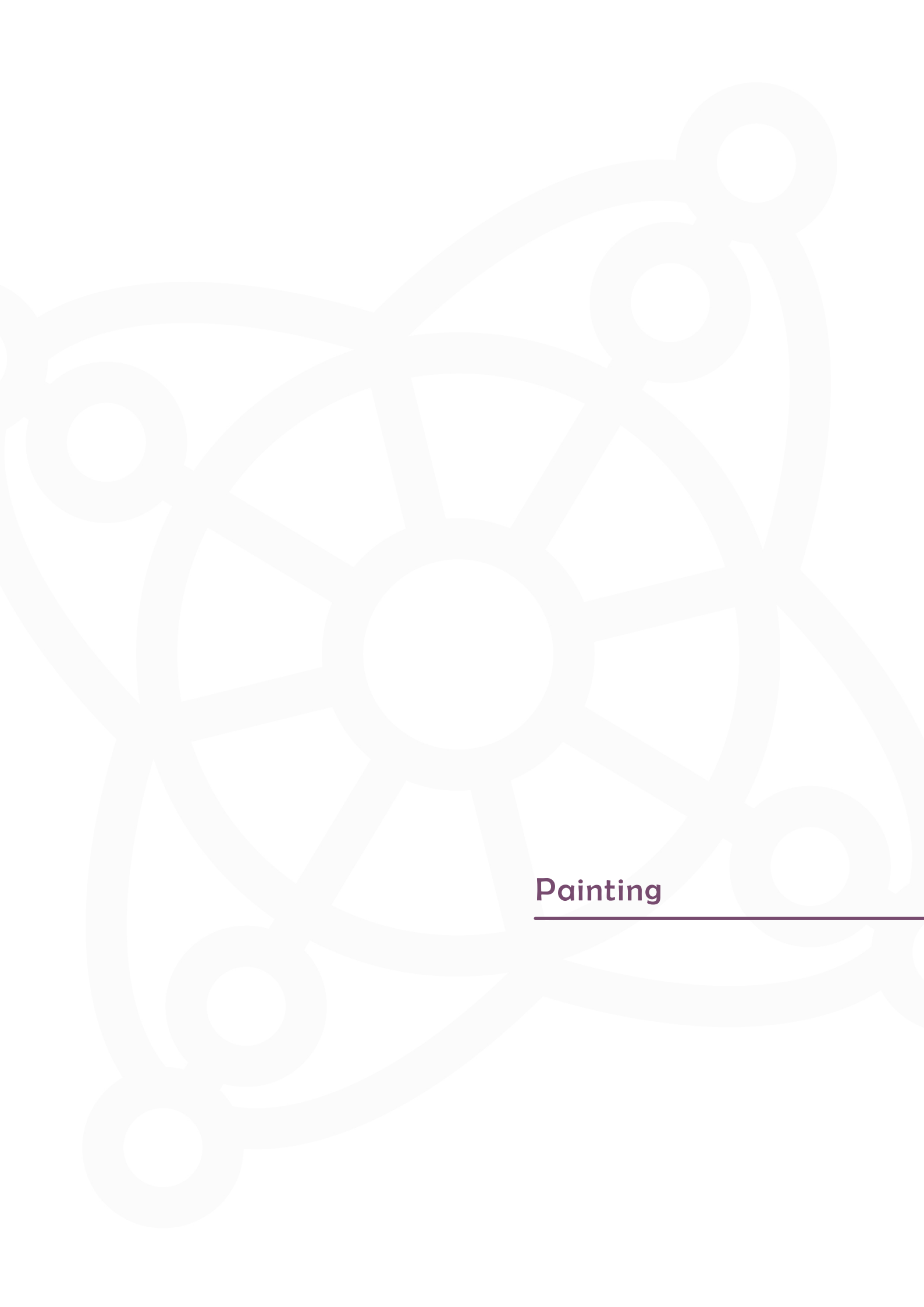
The panel was made while being tutored
in Flora Jamieson's Stained Glass studio.



'Flower'

Leaded glass panel

The panel was made as a final project for Flora Jamieson's online course 'Stained-Glass Art: Explore the Leaded Technique', based on the Domestika platform.



Painting



Painting



'Pond in Hafnarfjörður'

Watercolour



Painting



'Riverside Scene with the Master Builder's House, New Forest'

Watercolour



Painting



'Old Farmhouse' A copy of G. John Blockley

Watercolour



Painting



'St Mary's Church, Crawley'

Watercolour



Painting



'Scotney Castle'

Watercolour



Painting



'Darlington'

Watercolour



Painting

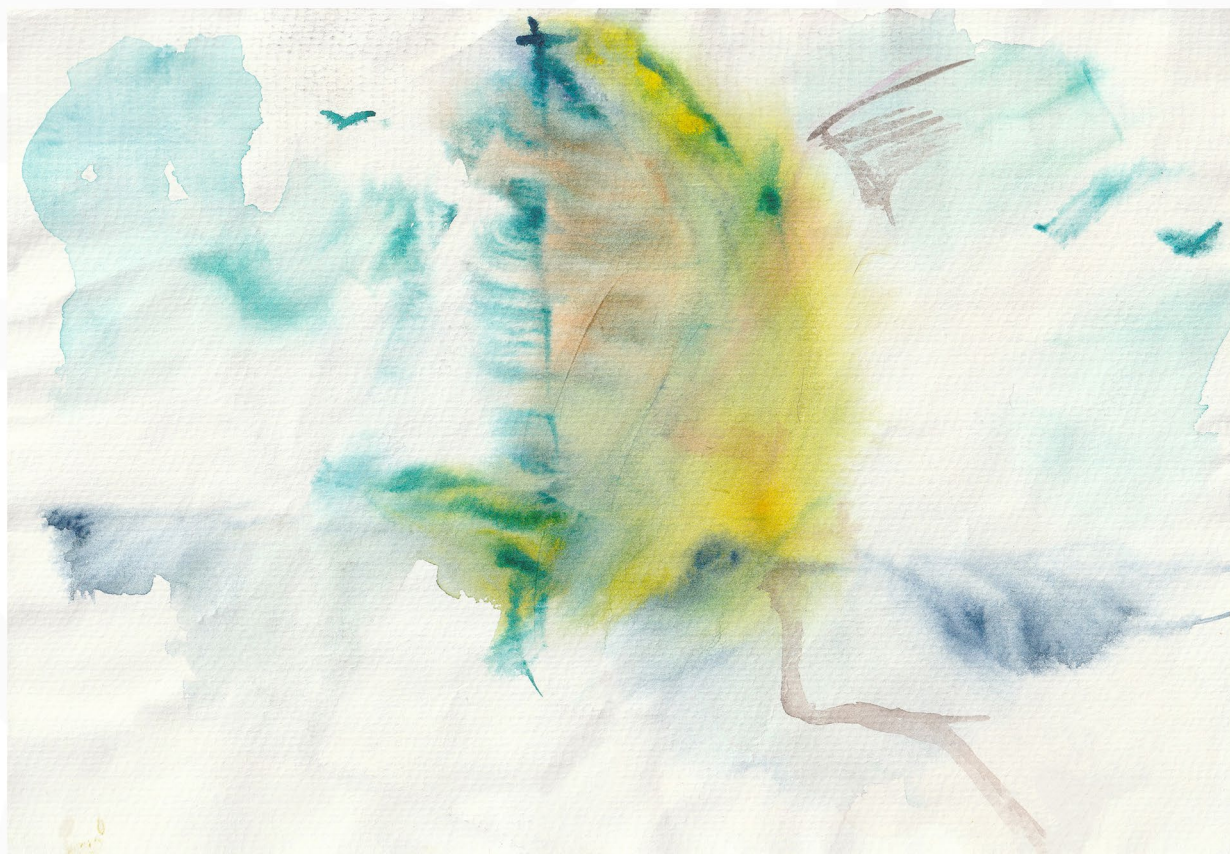


'Spring landscape'

Watercolour



Painting



'Sailing boat'

Watercolour



Painting



'Composition'

Gouach

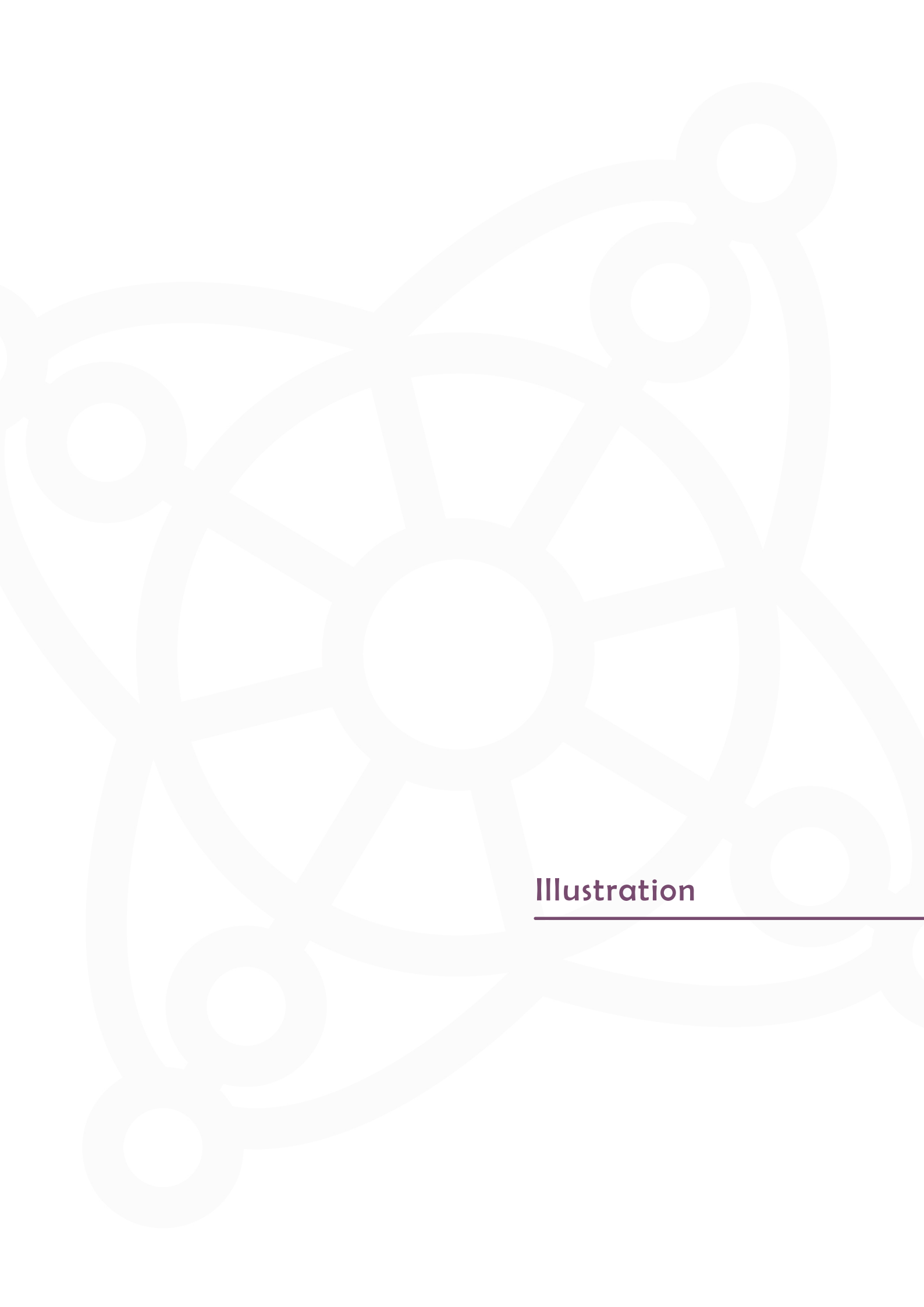


Painting



'Composition'

Gouach



Illustration



Illustration



'Pool'

Adobe Photoshop



Illustration



'StekkJarstaur' (Sheep-Cote Clod)'

Adobe Illustrator

This is a character from Icelandic folklore; he harasses sheep and walks on wooden legs. He arrives on the 12th of December.



Illustration



'Giljagaur' (Gully Gawk)

Adobe Illustrator

This is a character from Icelandic folklore; this one hides in gullies, sneaks into the cowshed and steals milk. He arrives on the 13th of December.



Illustration



'Samhain'

Adobe Photoshop



Illustration



'Sailor'

Adobe Illustrator



Illustration

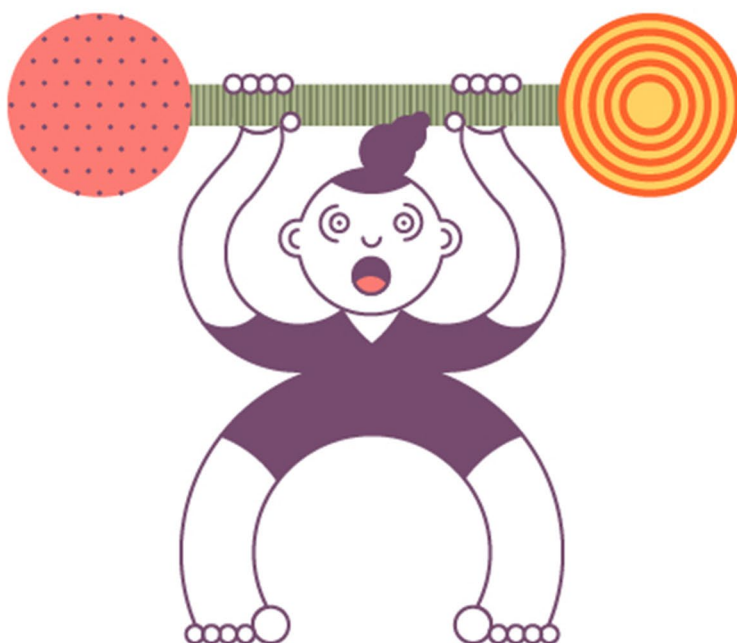


'Chill'

Adobe Illustrator



Illustration

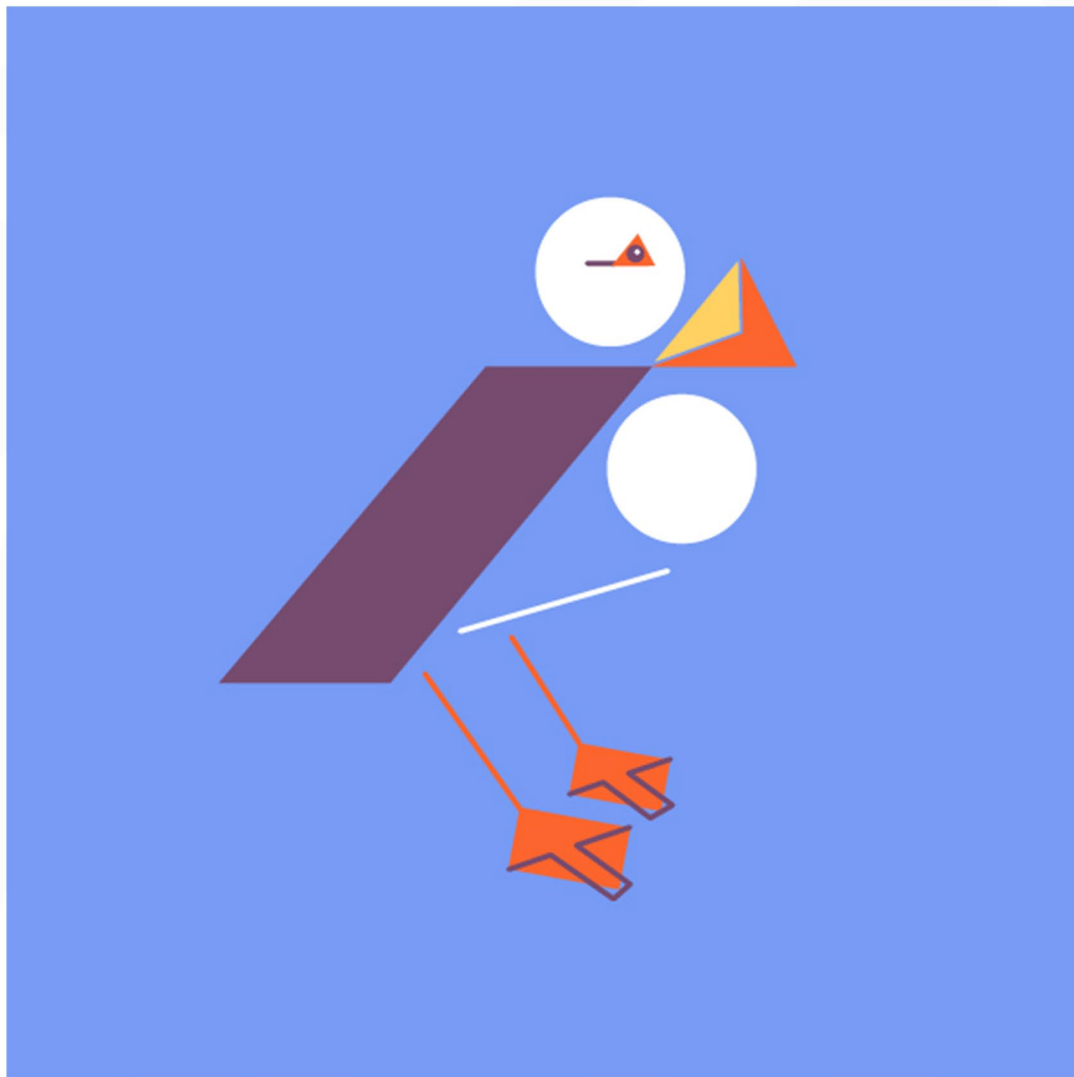


'Super Power'

Adobe Illustrator



Illustration



'Puffin'

Adobe Illustrator



Illustration



'Puffin on holiday'

Adobe Illustrator

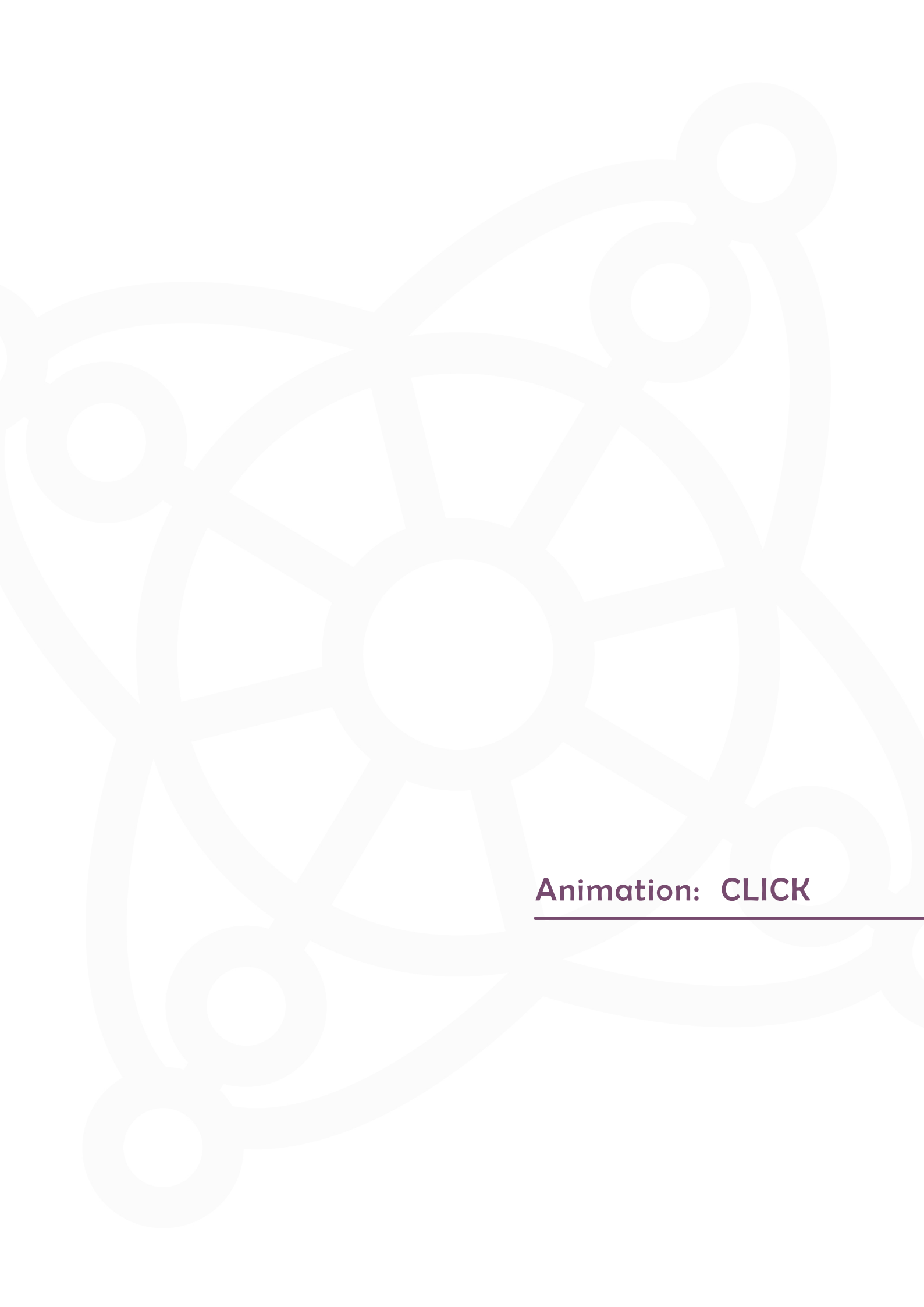


Illustration



'The Gigantic Turnip'

Adobe Illustrator



Animation: CLICK
