



NATALIIA BODROVA

PORTFOLIO

nataliibodrova@gmail.com
www.nataliibodrova.com



Stained Glass



'Inspired by William Morris' exhibition



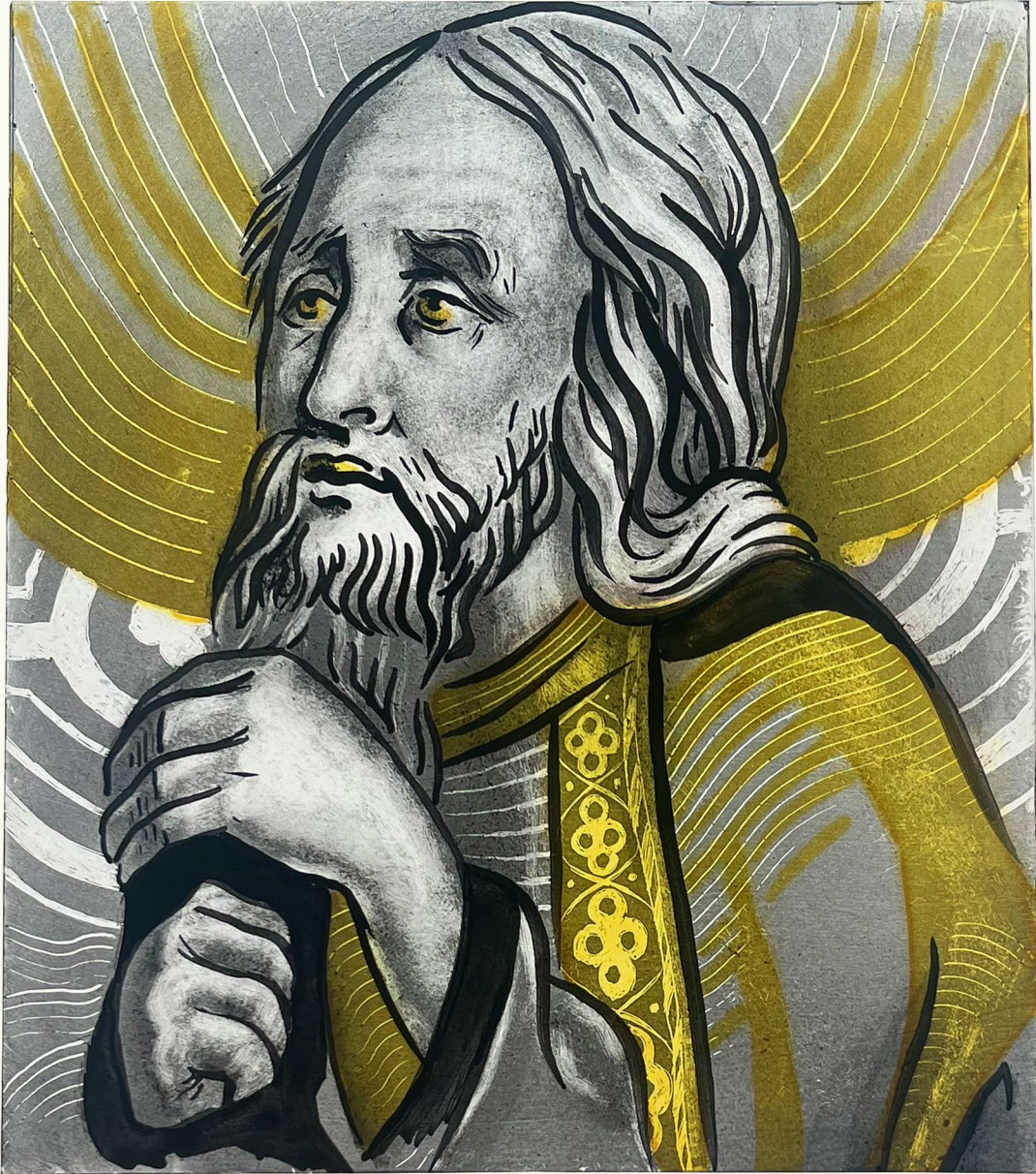
'Nature is watching'

Leaded glass panel

The panel was made for the online exhibition 'Inspired by William Morris' on the British Society of Master Glass Painters website.

'Odin One-Eyed, the main god of Icelandic pagan tradition, flanked by his two all seeing and all remembering ravens Huginn (Mind) and Muninn (Memory), whispering into his ears all that they have seen and heard, while mimicking a blueberry bush to observe our behaviour towards nature in secret.

Derek Hunt's workshop
'Two-days Glass Painting'

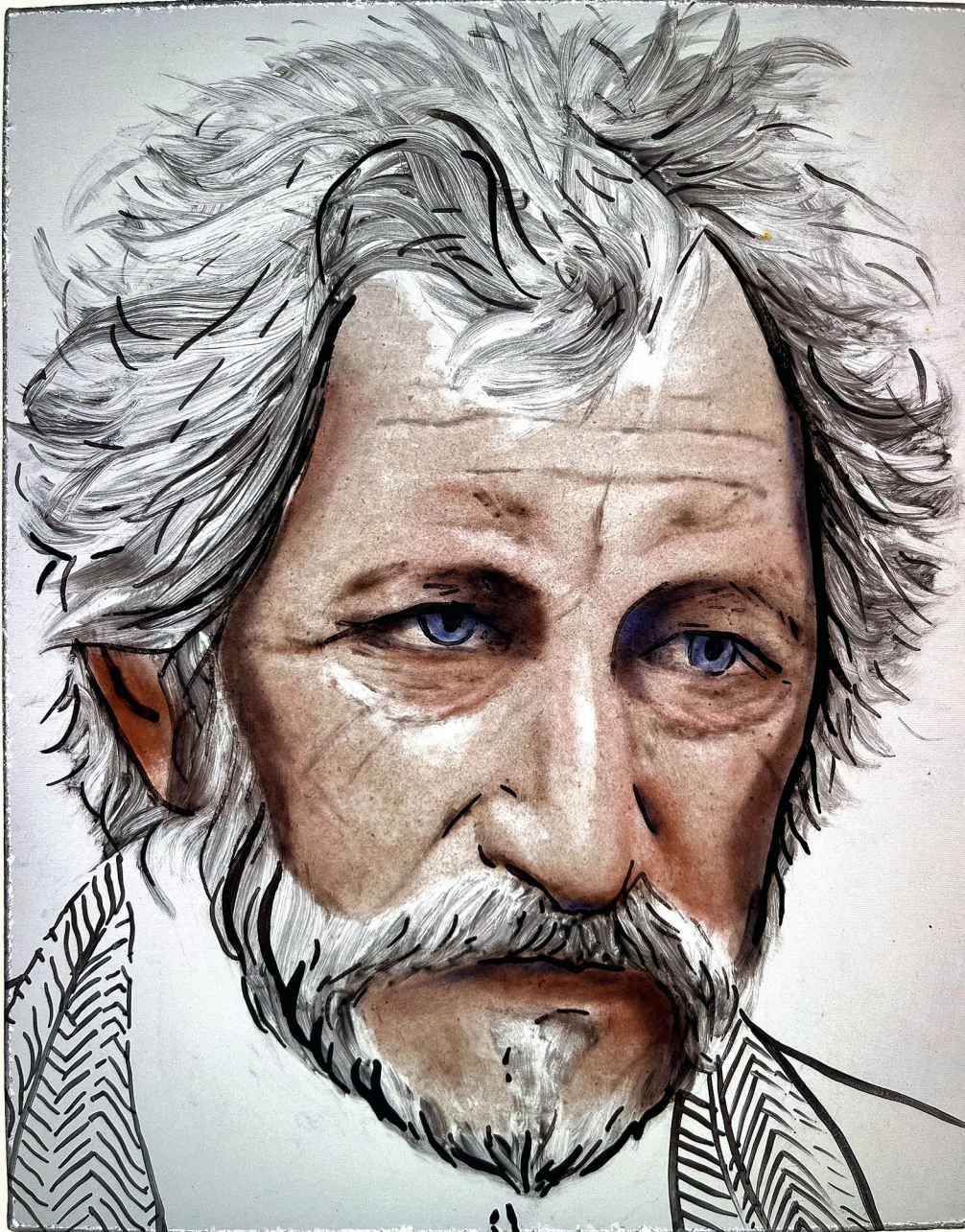


'Nativity scene' (fragment)

Painted and stained glass panel

This image represents a fragment of the original stained glass panel titled 'Nativity Scene', created by Thomas Willement around 1845. It was produced as part of the final project during my participation in the Two-Day Glass Painting Workshop, led by Derek Hunt at the Stained Glass Museum within Ely Cathedral.

Ellen van Dijk's workshop
'Advanced Portrait Painting'



'Male portrait'

Painted and enamelled glass panel

The glass panel is the final project, made while participating in the workshop 'Advanced Portrait Painting on Glass' by Ellen van Dijk at the Glasatelier Ellen.

Ellen van Dijk's workshop
'Advanced Portrait Painting'



'Saint'

Painted and stained glass panel

The glass panel is the final project, made while participating in the workshop 'Advanced Portrait Painting on Glass' by Ellen van Dijk at the Glasatelier Ellen.

Ellen van Dijk's workshop
'Advanced Portrait Painting'



'Lady'

Painted glass panel

The glass panel is the final project, made while participating in the workshop 'Advanced Portrait Painting on Glass' by Ellen van Dijk at the Glasatelier Ellen. The panel was painted with glycol.

Jonathan Cooke's masterclass



'Cecily of York' (reproduction)

Painted, stained and enamelled glass panel

The glass panel is the final project, made while participating in the masterclasses 'Glass Painting Masterclass' and 'Silver Stain and Enamel Masterclass' by Jonathan Cooke at The University of Wales Trinity Saint David.

Jonathan Cooke's masterclass



'Púki' /Demon/ (reproduction)

Painted, stained and enamelled glass panel

The glass panel (it is a copy of a passage from the main window of Hallgrímskirkja, which was made in 1999 by Leifur Breiðfjörð, the Icelandic stained glass artist) is the final project, made while participating in the masterclasses 'Glass Painting Masterclass' and 'Silver Stain and Enamel Masterclass' by Jonathan Cooke at The University of Wales Trinity Saint David.

Flora Jamieson's workshop



'Ocean'

Painted and leaded glass panel

The panel was made while being tutored
in Flora Jamieson's Stained Glass studio.

Flora Jamieson's workshop

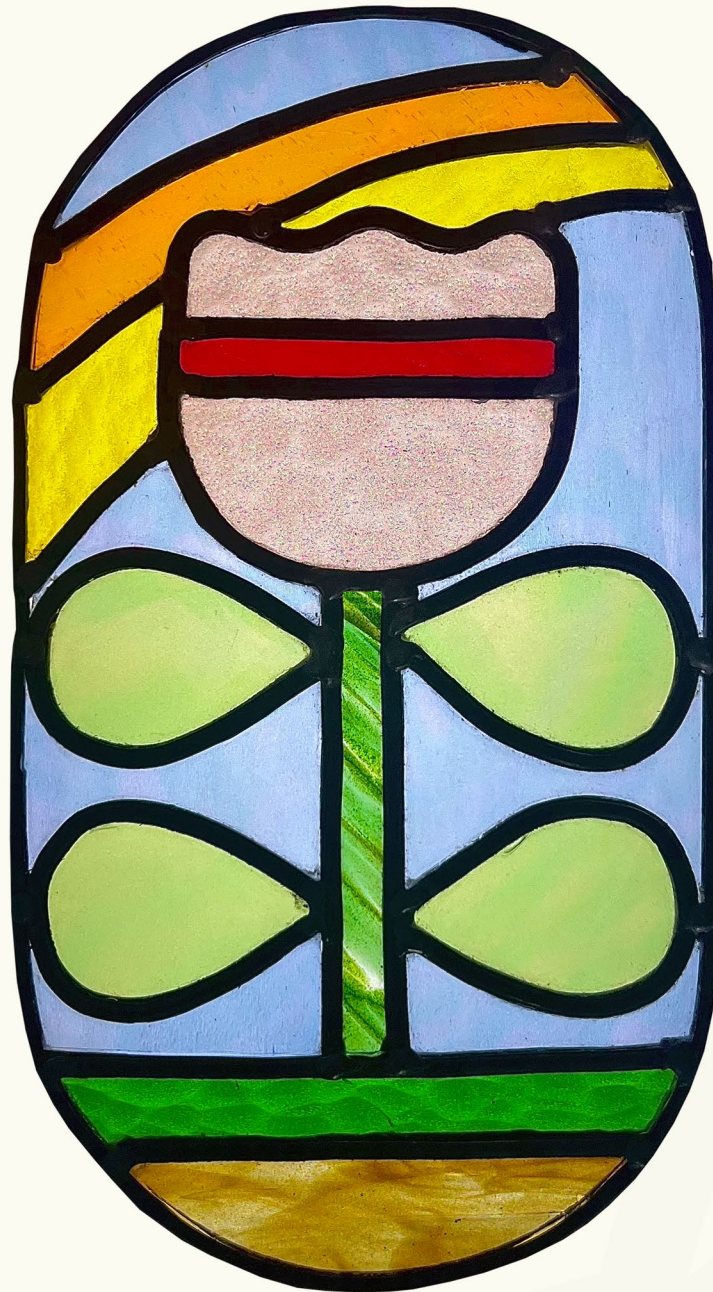


'The Window into the Garden'

Painted, stained and leaded glass panel in Victorian style

The panel was made while being tutored
in Flora Jamieson's Stained Glass studio.

Flora Jamieson's online masterclass



'Flower'

Leaded glass panel

The panel was made as a final project for Flora Jamieson's online course 'Stained-Glass Art: Explore the Leaded Technique', based on the Domestika platform.



Illustration



Illustration



'Time for Tea'

Adobe Photoshop

An illustration for a children's book spread, inspired by the theme 'Time for Tea,' created for the Post Wave Prize for Illustration 2026 competition.

Illustration



'Time for Tea'

Adobe Photoshop

An illustration for a children's book cover, inspired by the theme 'Time for Tea,' created for the Post Wave Prize for Illustration 2026 competition

Illustration



'Josh, focus, it's a serious game!'

Adobe Photoshop

The illustration made for the World Illustration Awards 2026 in the Children's Publishing category.

Illustration



'Jólabókaflóðið' (The Christmas book flood)

Adobe Photoshop

An illustration for a drawing competition hosted by Morgunblaðið and the Icelandic Publishers Association. The competition's theme is a visual interpretation of the Christmas book flood.

Illustration



'Pool'

Adobe Photoshop

Illustration



'Samhain'

Adobe Photoshop

Illustration



'The Puffin on Holiday'

Adobe Illustrator

Illustration



'Sailor'

Adobe Illustrator

Illustration



'Super Power'

Adobe Illustrator

Illustration



'The Gigantic Turnip'

Adobe Illustrator



Painting

Painting



'Scotney Castle'

Aquarelle / Ink

Painting



'St Mary's Church, Crawley'

Aquarelle / Ink

Painting



'Old Farmhouse'

An aquarelle copy of G. John Blockley

Painting



'The Fish Market'

An aquarelle copy of Edward Seago

Painting



'Riverside Scene with the Master Builder's House, New Forest'

Aquarelle

Painting



'Limpstone Harbour'

An aquarelle copy of Alwyn Crawshaw

Painting



'Darlington'

Aquarelle

Painting



'Spring landscape'

Aquarelle

Painting



'Gálgahraun'

Aquarelle

Painting



'Still life'

Gouach



Animation